



# Getting the balance right: NSW land use

- ✓ Working with communities
- ✓ Protecting what's important
- ✓ Planning ahead





# From the Ministers



**Andrew Stoner**

Deputy Premier  
Minister for Trade and Investment and  
Minister for Regional Infrastructure and Services



**Brad Hazzard**

Minister for Planning & Infrastructure

The NSW Government has implemented new measures to further strengthen the regulation of the Coal Seam Gas (CSG) industry in NSW. This will ensure our residential areas and country towns and villages are automatically excluded from new CSG activity. There are added safeguards in place for our high-quality farmland, while at the same time allowing for the sustainable development of a world-class resources industry.

For too long the NSW community has lacked confidence in how we balance the land use needs of our important farming and resource industries. The NSW Government has listened to the community's concerns and introduced the toughest CSG laws in Australia.

Under the new laws, there will be added safeguards in place for more than five million hectares of residential and farming land. This includes 2.3 million hectares of the State where CSG activity cannot occur, with new CSG wells banned within two kilometres of homes in our cities, towns and villages.

We have also mapped the valuable horse and wine industries in the Upper Hunter region where new CSG activity will be excluded, and for the first time in the State's history, have carried out extensive mapping to identify where our high-quality agricultural land is located so that we can properly manage it.

Importantly, through our new Gateway process the NSW Government has established an independent expert panel to ensure significant resource proposals involving high-quality agricultural land are subject to rigorous scrutiny and land and water resources are given up-front consideration in the assessment process.

This is a landmark moment for regional land-use planning in this State. It ensures we get the balance right so that agriculture, communities and resource development can co-exist.

## ✓ GETTING THE BALANCE RIGHT

We will ensure the right balance is struck between resources and agriculture in NSW. Our extensive State-wide mapping identifies where our high-quality agricultural land is and we have established an independent Gateway panel to ensure that significant resource proposals on this land are subject to rigorous scrutiny.

## ✓ PROTECTING WHAT'S IMPORTANT

NSW has the toughest Coal Seam Gas laws in Australia. We have listened to community concerns and implemented strict measures to exclude residential areas from CSG and introduce added precautions for high quality agricultural land. Importantly we have banned new wells from within 2km of homes and CSG exclusion zones are now in force across 2.3 million hectares of the State.

## ✓ PLANNING AHEAD

Planning for regional land use will now be upfront and transparent. Agriculture and mining both have an important place in NSW and it's essential that they co-exist. The NSW Government will continue to have an ongoing conversation with the community to ensure concerns are addressed.

# Working with communities



The growth in mining and coal seam gas activity in some regions of the State is creating land use conflict. Communities are expressing concern about the effect on their farms, water and their homes.

The NSW Government is listening and has already:

- ✓ Appointed a Land and Water Commissioner
- ✓ Introduced an Aquifer Interference Policy
- ✓ Banned BTEX chemicals and evaporation ponds for CSG projects
- ✓ Introduced Strategic Regional Land Use Plans for the Upper Hunter and New England North West and is now exhibiting mapping for an additional one million hectares of strategic agricultural land
- ✓ Commissioned a review of CSG activities by the Chief Scientist & Engineer
- ✓ Introduced two new codes of practice for the CSG industry
- ✓ Axed the former Government's five-year royalty holiday for CSG producers

That was just the start.

## Protecting our homes



**2km Exclusion zones**

## What we need to balance



**Conflict between resources and agriculture**



**Community questions**





# Getting the balance right



The NSW Government said it was going to do more and it is – delivering greater protection to more than five million hectares of residential and farming land.

## CSG

New CSG activity excluded from within 2km of residential areas. CSG exclusion zones now cover 2.3 million hectares and plans are on exhibition to extend these zones to additional villages and future growth areas across the State.

## Farmland

2.8 million hectares of strategic agricultural land mapped across the state – two years ahead of schedule.

## Gateway scrutiny

Gateway process now in force with mining and CSG proposals on strategic agricultural land and its water undergoing rigorous, independent scrutiny.

## Equine and viticulture

CSG exclusion zones will be applied to these critical industries, and the Gateway process will apply for mining proposals. Revised maps of Upper Hunter Critical Industry Clusters now on exhibition.

## Importance of high-quality agricultural land

**\$12b**  
per year to NSW



### NSW's best land



Water



Fertility



Productivity

## Importance of mining industry

**\$20b**  
per year to NSW



### Royalties deliver services and infrastructure



Hospitals



Schools



Roads

For the first time in the State's history the NSW Government has mapped 2.8 million hectares of land to identify and protect our strategic agricultural land.

Any significant resource proposals on this land will be scrutinised by our new independent Gateway Panel. The Panel members are experts in agriculture, water and resources and were selected by an interview panel including representatives from the NSW Minerals Council and the NSW Farmers Association.



## NSW land use safeguards

### Upper Hunter

CSG exclusions in force: 64,527  
Proposed CSG exclusions (Residential): 10,695  
Proposed CSG exclusions (CICs): 246,964  
Total: 322,186  
BSAL: 211,060

### Western

CSG exclusions in force: 95,717  
Proposed CSG exclusions: 2,910  
Total: 98,627  
BSAL: 135,907

### New England North West

CSG exclusions in force: 235,185  
Proposed CSG exclusions: 7,369  
Total: 242,554  
BSAL: 1,525,462

### Mid & Far North Coast

CSG exclusions in force: 399,289  
Proposed CSG exclusions: 41,553  
Total: 440,842  
BSAL: 249,102

### Central West

CSG exclusions in force: 301,439  
Proposed CSG exclusions: 11,057  
Total: 312,496  
BSAL: 472,892

WILCANNIA

### Murrumbidgee & Murray

CSG exclusions in force: 308,981  
Proposed CSG exclusions: 1,922  
Total: 310,903  
BSAL: 44,007

### Alpine

CSG exclusions in force: 58,309  
Proposed CSG exclusions: 128  
Total: 58,437  
BSAL: 40,604

### Far South Coast and Illawarra

CSG exclusions in force: 186,281  
Proposed CSG exclusions: 12,838  
Total: 199,119  
BSAL: 29,547

### Lower Hunter & Central Coast

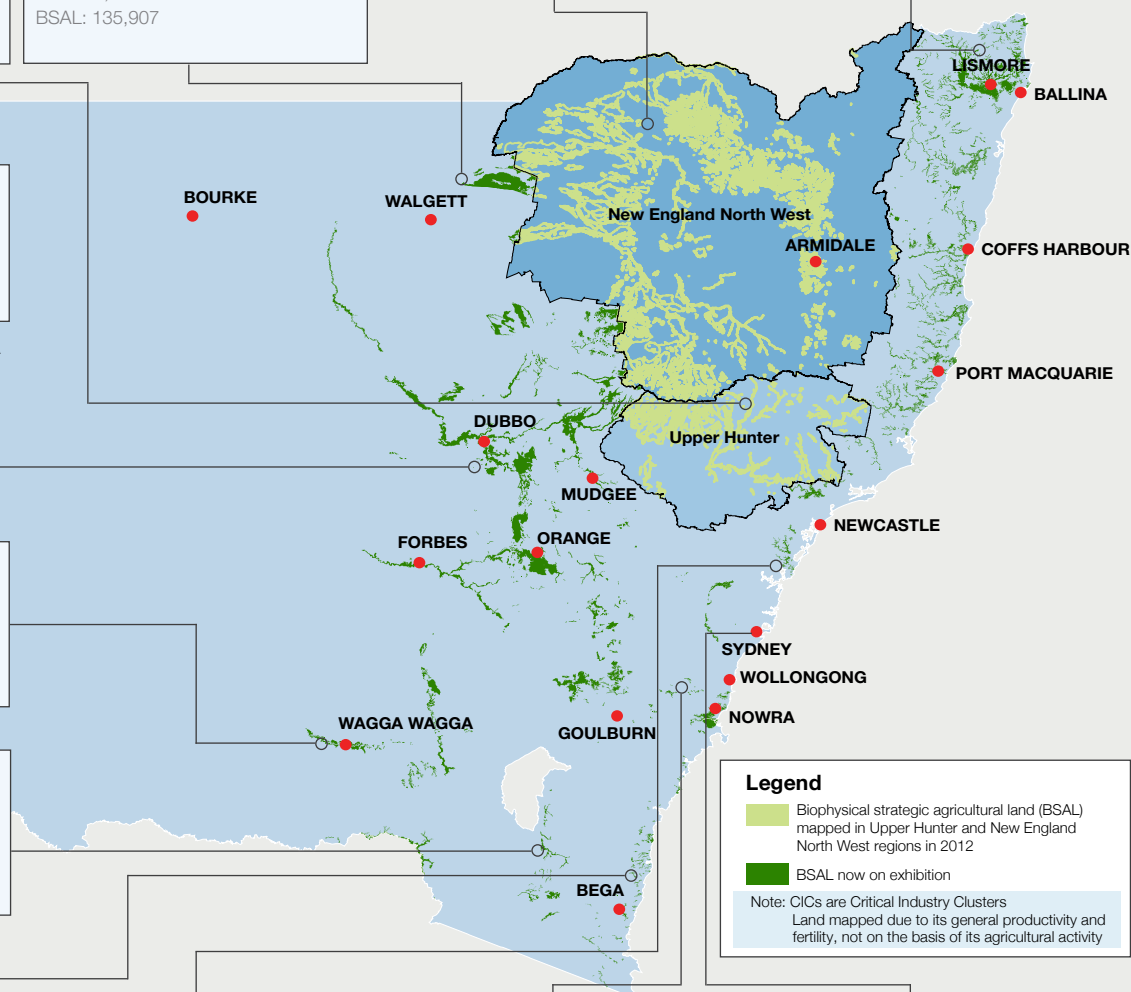
CSG exclusions in force: 213,332  
Proposed CSG exclusions: 8,339  
Total: 221,671  
BSAL: 17,915

### Southern Highlands

CSG exclusions in force: 127,473  
Proposed CSG exclusions: 7,161  
Total: 134,634  
BSAL: 51,818

### Sydney Metropolitan

CSG exclusions in force: 353,509  
Proposed CSG exclusions: 31,379  
Total: 384,888  
BSAL: 10,622



# Protecting what's important



NSW has the toughest CSG laws in Australia. We have listened to community concerns and implemented strict measures to protect residential areas and high-quality agricultural land from CSG activity.

- ✓ NSW has the toughest CSG laws in Australia
- ✓ New CSG wells excluded from within 2km of homes
- ✓ CSG exclusion zones now in force on 2.3 million hectares across the State
- ✓ Proposals on exhibition to further extend exclusion zones
- ✓ BTEX chemicals and evaporation ponds for CSG projects banned
- ✓ 2.8 million hectares of high quality agricultural land mapped – two years ahead of schedule
- ✓ Independent Gateway Panel established to ensure rigorous independent scrutiny
- ✓ Critical industry clusters in the Upper Hunter verified and revised maps now on exhibition
- ✓ Greater protection introduced for more than five million hectares of residential and farming land
- ✓ Strategic and transparent regional land use planning approach adopted
- ✓ Land and Water Commissioner appointed to provide independent community advice on exploration and land access issues
- ✓ Aquifer Interference Policy introduced to protect our valuable groundwater resources
- ✓ Independent review of CSG activities commenced by the NSW Chief Scientist and Engineer
- ✓ The former Government's five-year royalty holiday for CSG producers removed
- ✓ Open conversations with the community to continue

## The new system



Independent  
scrutiny



# Planning ahead

Agriculture and the resources industry are critical to the future of NSW and the Government is getting the balance right.

We want an ongoing conversation with the community, and invite feedback on these additional proposals.

- ✓ Mapping of an additional one million hectares of our most valuable farming land (biophysical strategic agricultural land)
- ✓ Extending CSG exclusion zones to future residential growth areas in 56 council areas across NSW
- ✓ Extending CSG exclusion zones to additional rural village areas
- ✓ Revised maps showing the location of our wine and horse critical industries in the Upper Hunter region.

**The NSW Government is safeguarding our communities, our important agriculture and resources industries, and our future prosperity.**



## Have your say

To view the proposals on exhibition and provide a submission visit:

[www.planning.nsw.gov.au/srlup](http://www.planning.nsw.gov.au/srlup)

Further information, including exhibition documents can be found on the Department of Planning and Infrastructure's website [www.planning.nsw.gov.au/srlup](http://www.planning.nsw.gov.au/srlup) or call 1300 305 695 or email [srlup@planning.nsw.gov.au](mailto:srlup@planning.nsw.gov.au)

# Getting the balance right: NSW land use

- ✓ Working with communities
- ✓ Protecting what's important
- ✓ Planning ahead

## Find out more

[www.planning.nsw.gov.au/srlup](http://www.planning.nsw.gov.au/srlup)

Twitter: @NSWPlanning

Facebook: /NSWPlanning

Phone: 1300 305 695

